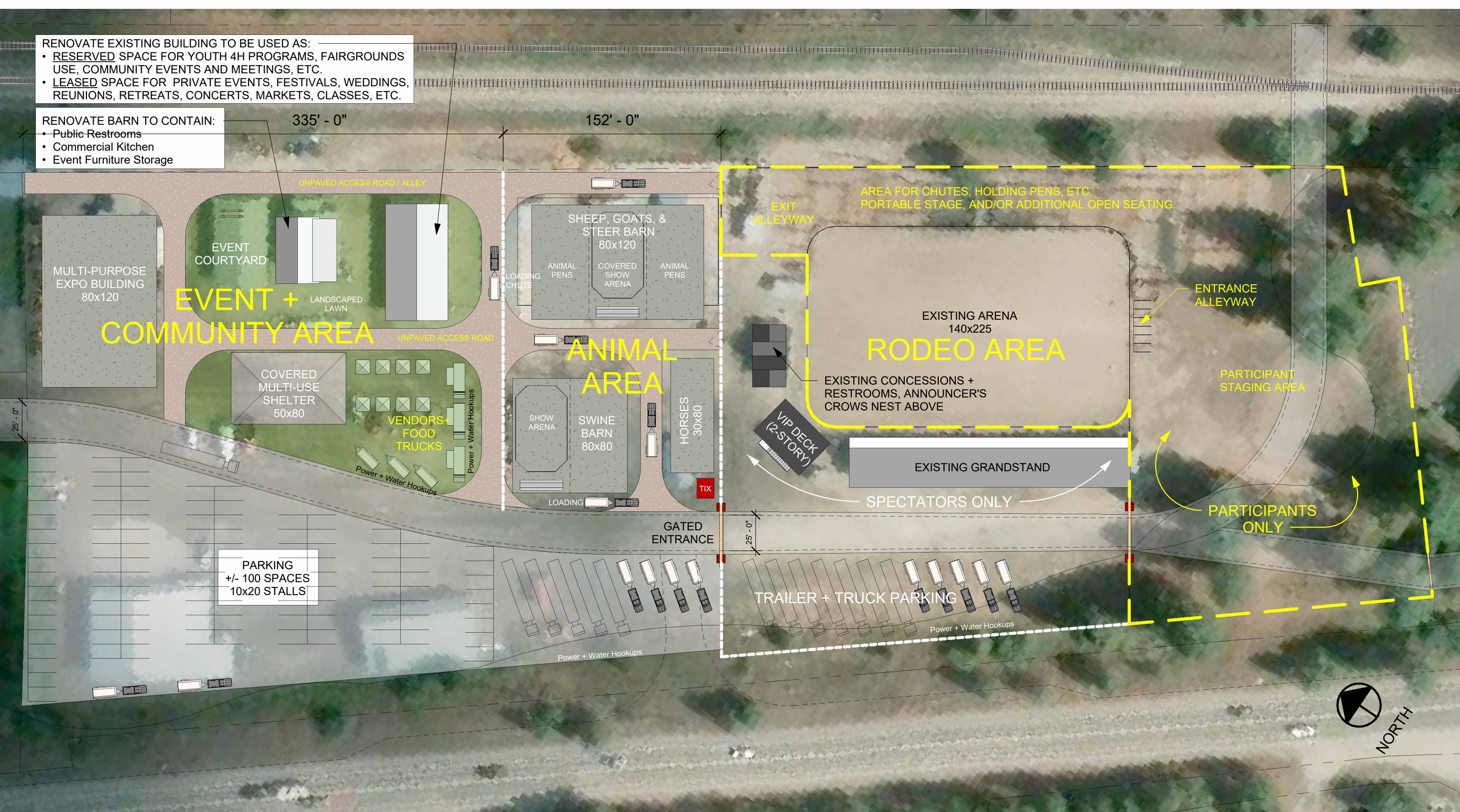


RENOVATE EXISTING BUILDING TO BE USED AS:

- RESERVED SPACE FOR YOUTH 4H PROGRAMS, FAIRGROUNDS USE, COMMUNITY EVENTS AND MEETINGS, ETC.
- LEASED SPACE FOR PRIVATE EVENTS, FESTIVALS, WEDDINGS, REUNIONS, RETREATS, CONCERTS, MARKETS, CLASSES, ETC.

RENOVATE BARN TO CONTAIN:

- Public Restrooms
- Commercial Kitchen
- Event Furniture Storage



RENOVATE EXISTING BUILDING TO BE USED AS:

- RESERVED SPACE FOR YOUTH 4H PROGRAMS, FAIRGROUNDS USE, COMMUNITY EVENTS AND MEETINGS, ETC.
- LEASED SPACE FOR PRIVATE EVENTS, FESTIVALS, WEDDINGS, REUNIONS, RETREATS, CONCERTS, MARKETS, CLASSES, ETC.

RENOVATE BARN TO CONTAIN:

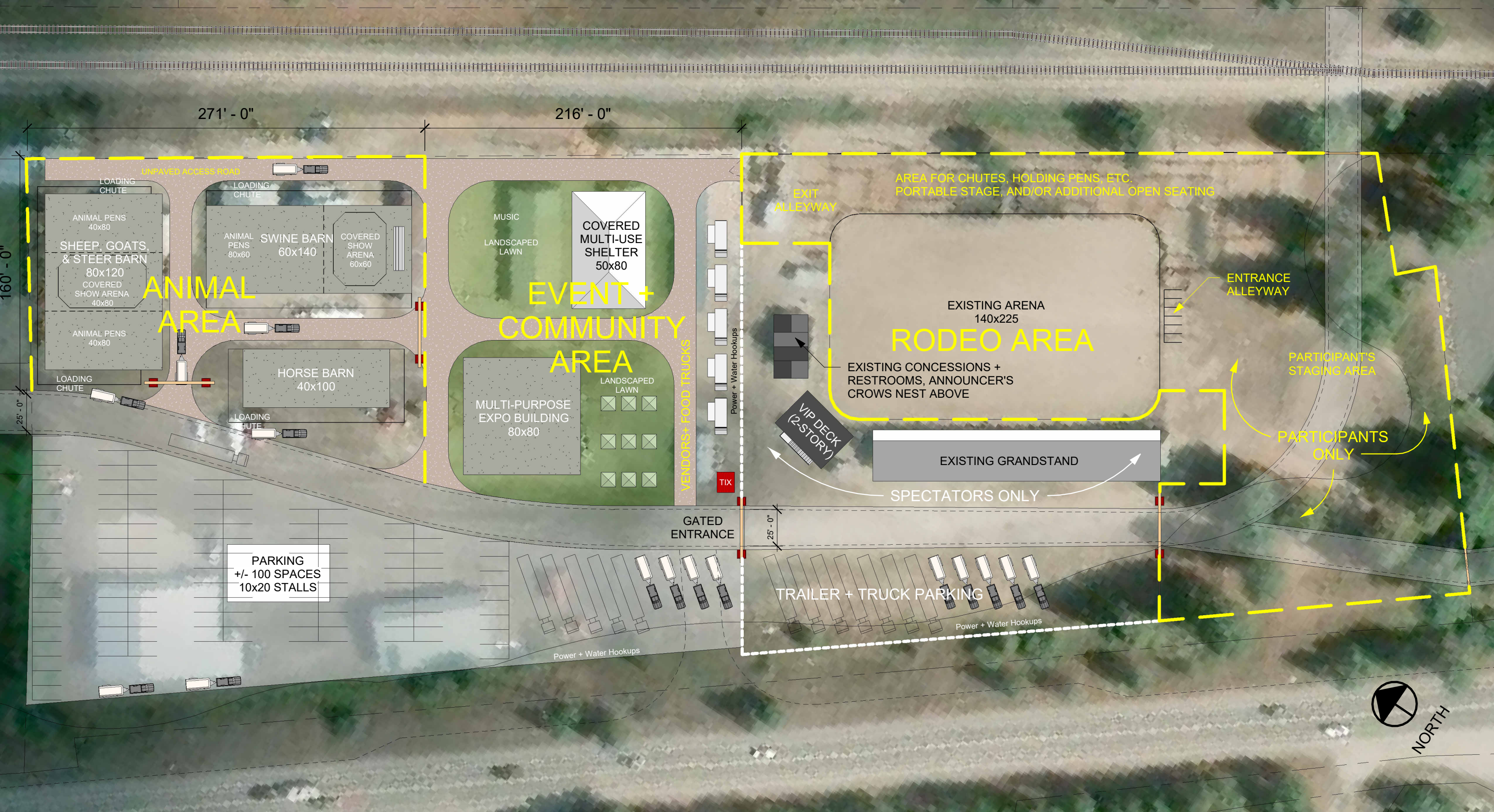
- Public Restrooms
- Commercial Kitchen
- Event Furniture Storage



FAIR & COMMUNITY ZONE - Small Scenario (Animals North)

Build a large, covered, open-air multi-use barn building to house sheep, goats and steer with a covered show arena on the North side of the site. Build a smaller barn for pigs with a show arena and a separate barn for horses. The Event and Community area is located in the center of the site adjacent to the Rodeo. The red barns are demolished with a new multi-use shelter built in its place.

Fairgrounds Scenario (Small - Animals North)



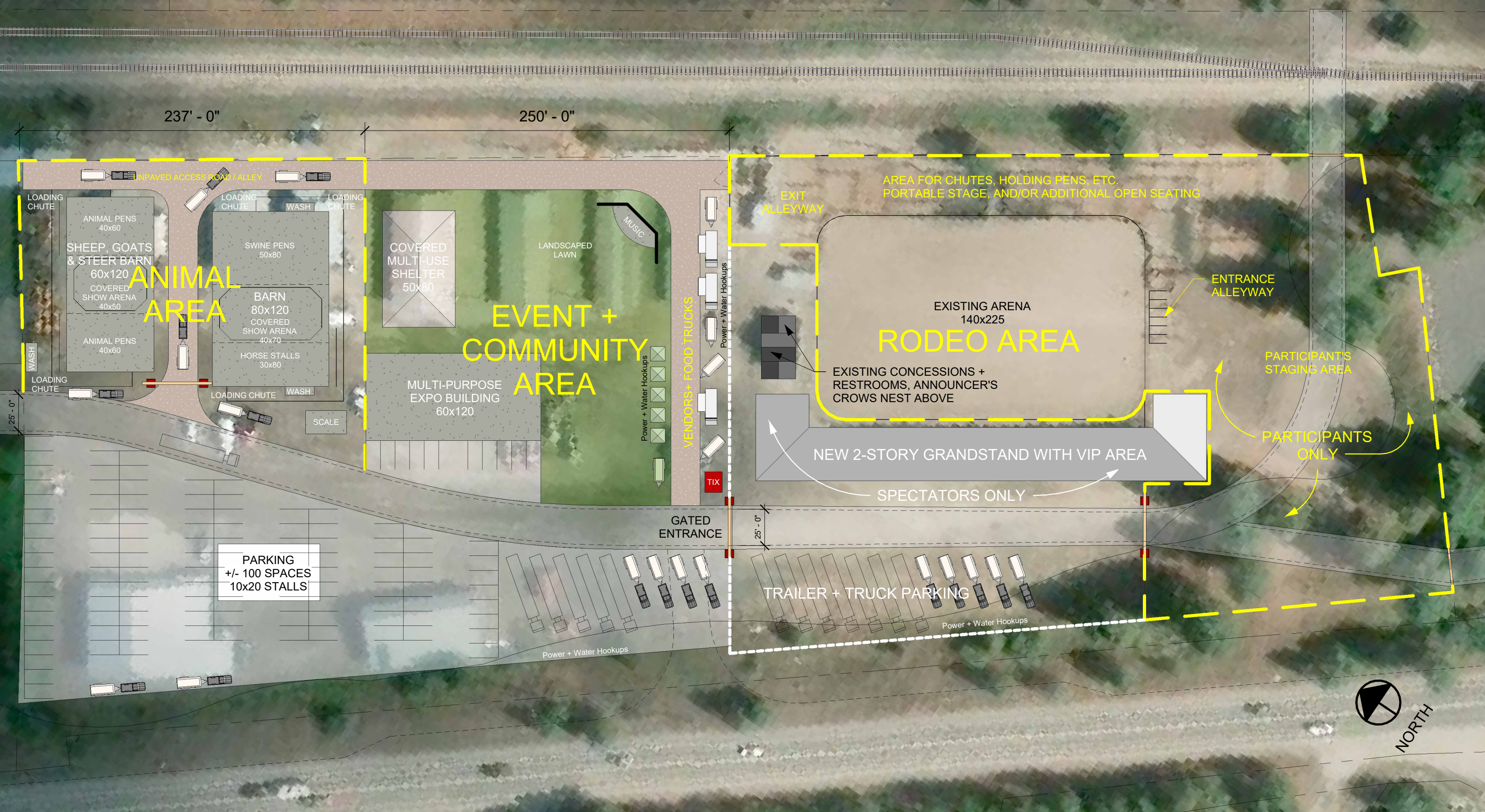
FAIR & COMMUNITY ZONE - Medium Scenario

Demo all existing buildings on east side of property. Build a large, covered, open-air multi-use barn building to house sheep, goats and steer with a covered show arena to the North. Build a covered, open-air multi-use barn to house swine with its own covered show arena, and a separate horse barn as shown. The Event and Community area is located in the center of the site adjacent to the Rodeo.



VALLEY COUNTY FAIRGROUNDS
PRELIMINARY SCENARIOS
APRIL 20, 2026 (revised)

Fairgrounds Scenario (Medium)



FAIR & COMMUNITY ZONE - Large Scenario

Demo all existing buildings on east side of property. Build a large, covered, open-air multi-use barn building to house sheep, goats and steer with a covered show arena to the North. Build a covered, open-air multi-use barn to house swine and horses with its own covered show arena as shown. The Event and Community area is located in the center of the site adjacent to the Rodeo and includes a large, enclosed multi-purpose expo center.

Fairgrounds Scenario (Large)



VALLEY COUNTY FAIRGROUNDS
PRELIMINARY SCENARIOS
APRIL 20, 2026 (revised)